

*Collection that brings new technologies to the surfaces of architecture to revolutionize the decoration of any ceramic piece.*

*A decoration based on the selective metallization of surfaces that allows the creation of unique and totally personalized designs to obtain exclusive pieces.*

*Undoubtedly, a great choice to create different, unique and full of personality spaces.*

*Colección que aporta nuevas tecnologías hasta las superficies de la arquitectura para revolucionar la decoración de cualquier pieza cerámica.*

*Una decoración basada en la metalización selectiva de superficies y que permite crear diseños únicos y totalmente personalizados para obtener piezas exclusivas.*

*Sin duda, una gran elección para crear espacios diferentes, únicos y llenos de personalidad.*

## **Selective Collection**



# Fusion

FUSION shapes the walls and covers them with a rich and elegant oxide-like proposal, similar to a sheet of metal aged by atmospheric agents. Its surface is characterized by the live and solid appearance of iron, with its particular chromatic nuances and roughness to the touch.

*FUSIÓN da forma a las paredes y las reviste de una rica y elegante propuesta de aspecto óxido, similar a una lámina de metal envejecida por agentes atmosféricos. Su superficie se caracteriza por el aspecto vivo y sólido del hierro, con sus particulares matices cromáticos y rugosidad al tacto.*





# Fusion

---

Porcelain tile / *Gres porcelánico*  
Thickness: 10mm (0,39") / *Espesor: 10mm*  
Rectified / *Rectificado*

30x60 cm  
12"x24"

**Natural Finish / *Acabado Mate***  
**Walls and flooring use / *Revestimiento de paredes y suelos***  
**Indoor & outdoor / *Interior y exterior***

Cream Gold



Grey Silver



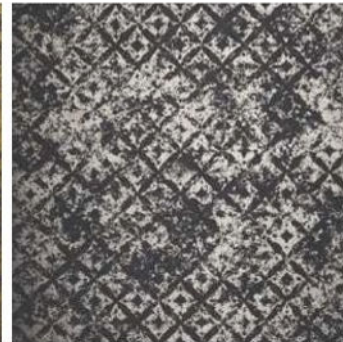
Cream Rose Gold



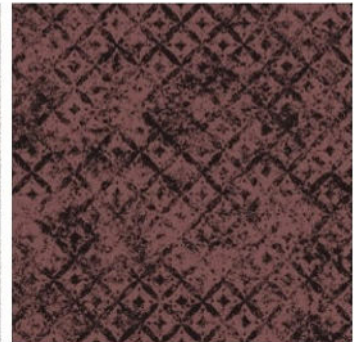
Black Gold



Black Silver



Black Rose Gold



# Technical Data

# Laying advice

## 1. Choosing a ceramic tile

When choosing a ceramic tile to cover a certain surface, attention must be paid to a series of aesthetical (color, design, texture, etc.) and technical (physical-chemical features, etc.) conditions. The technical factors for an adequate choice will depend on the specific situation, weather conditions in region, and expected use.

The ceramic pieces contained in this catalog are decorated with a thin metal application. Manipulate with special care. Improper handling (scratching and/or scraping) and improper use of abrasive detergents can damage the pieces. Treat these in particular with extreme careful.

These products are not suitable for wet areas like public spas or swimming pools where aggressive saline and/or disinfectant products like bleach are used.

## 2. Initial verification

Prior to placing the ceramic tile, the client should check that it is in agreement with the requested features (model, quality, shape, tone, gage, etc.). If any ceramic piece is defective, do not use and communicate this to your provider. Not accept any claims once placed the product.

## 3. Lay out

It is recommended that the layout of the product is prepared before the final installation. The surface for placing the tiles must be flat, firm, stable, compatible with the binding material, and clean.

We recommend using cement glue with polymeric additives as fitting material.

Recommended product: **H40 (Kerakoll)**

Before preparing the binding material, check the manufacturer's indications (way to use, etc).

The bonding materials are applied with a notched trowel to ensure optimal distribution across the surface. Should be avoided that the residues of fitting material get dry, remaining adhered on the surface of pieces, using a slightly damp sponge to clean the tile joints, passing it diagonally across them. Do not use dirty or brackish water.

## 4. Jointing

For technical reasons, it is not advisable to lay ceramic tiles without the corresponding layout joint.

For choosing the jointing material, one should take into account the place where the tiles (floor or wall) are fitted and their situation (indoor or outdoor), the use of joints with polymeric additives or synthetic resins being recommendable, and not Portland cement grout.

Recommended product: **Fugalite / Fugabella (Kerakoll)**

## 5. Cleaning









Do not use commercial products known as cement removers or scale removers, acid solutions used mainly to remove cement debris (work debris).

For cleaning excess installation materials before they have dried, use a sponge and plenty of water.

For subsequent cleanings we recommend the use of a soap damp-ened in water and neutral soap. Do not use powder detergents, nor metallic mops or abrasives. Do not use abrasive, acidic or alkaline cleaning products. Use a soft sponge with liquid soap and water to clean the tiles, and then dry them with a fine cloth.

Recommended product: **Fuga Soap (Kerakoll)**

# Uses complete list

SERIE	Indoors 	Outdoors 	Wall 	Floor light traffic 	Floor medium traffic 	Shower wall 	Shower floor 	High vapour condensation areas (sauna, turkish bath) 
Abstra	✓	✓	✓			✓		✓
Rake	✓	✓	✓			✓		✓
House	✓	✓	✓			✓		✓
Framed	✓	✓	✓			✓		✓
Mist	✓	✓	✓			✓		✓
2Lines	✓	✓	✓			✓		✓
Slate	✓	✓	✓	✓		✓	✓	✓
Urban	✓	✓	✓	✓		✓	✓	✓
Artic	✓	✓	✓	✓		✓	✓	
Fusion	✓	✓	✓		✓	✓	✓	✓
Tempo	✓	✓	✓		✓	✓	✓	✓
Jurgen	✓	✓	✓			✓		✓
Metrik	✓		✓			✓		✓
Kondo	✓		✓			✓		✓
Trames	✓		✓			✓		✓
2Moreone	✓		✓			✓		✓
Cottage	✓		✓			✓		✓
Become	✓		✓			✓		✓
2Geom	✓		✓			✓		✓
Cosmos	✓		✓			✓		✓