

Collection of textured ceramic tiles to transform any space into a place with refined and distinguished style, allowing an impressive sense of movement, which will undoubtedly elevate the decor of any space.

Natural finishes, faux polished, lappato, rustic and much more. Explore all the possibilities of the series in this collection and start imagining the look and feel of your walls and floors now.

Colección de baldosas texturizadas para transformar cualquier espacio en un lugar con estilo refinado y distinguido, permitiendo una impresionante sensación de movimiento, que sin duda elevará la decoración de cualquier espacio.

Acabados naturales, falsos pulidos, lappatos, rústicos y mucho más.

Explore todas las posibilidades de las series de esta colección y empiece hoy mismo a imaginar el aspecto y la sensación de sus paredes y suelos.

Textures Collection



Mist

It is curious how nowadays everything old and old reminds us of the past, which is so fashionable. Like those mirrors in which one can hardly even look, but that seem to bring to the present reflections of ancient times and an elegance and distant stories that are difficult to find sometimes in contemporary designs. MIST is inspired by aged mirrors, which give us infinite reflections and a chromatics of intense and elegant tones.

Es curioso como en la actualidad todo lo antiguo, lo envejecido, nos recuerda al pasado que está tan de moda. Como esos espejos en los que casi no puede uno ni mirarse, pero que parecen traer al presente reflejos de tiempos remotos y una elegancia e historias lejanas que cuesta encontrar a veces en los diseños contemporáneos. La nueva serie MIST tiene su inspiración en los espejos envejecidos, que nos aportan infinitos reflejos y un cromatismo de tonos intensos y elegantes.





Mist

Porcelain tile / *Gres porcelánico*
Thickness: 10mm (0,39") / *Espesor: 10mm*
Rectified / *Rectificado*



Polished Finish / *Acabado Pulido*
Wallcovering use / *Revestimiento de paredes*
Indoor & outdoor / *Interior y exterior*

Silver



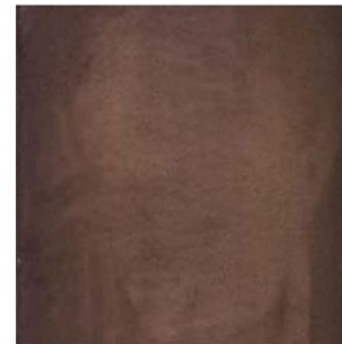
Gold



Blue



Rose Gold



Aubergine



Technical Data

Laying advice

1. Choosing a ceramic tile

When choosing a ceramic tile to cover a certain surface, attention must be paid to a series of aesthetical (color, design, texture, etc.) and technical (physical-chemical features, etc.) conditions. The technical factors for an adequate choice will depend on the specific situation, weather conditions in region, and expected use.

The ceramic pieces contained in this catalog are decorated with a thin metal application. Manipulate with special care. Improper handling (scratching and/or scraping) and improper use of abrasive detergents can damage the pieces. Treat these in particular with extreme careful.

These products are not suitable for wet areas like public spas or swimming pools where aggressive saline and/or disinfectant products like bleach are used.

2. Initial verification

Prior to placing the ceramic tile, the client should check that it is in agreement with the requested features (model, quality, shape, tone, gage, etc.). If any ceramic piece is defective, do not use and communicate this to your provider. Not accept any claims once placed the product.

3. Lay out

It is recommended that the layout of the product is prepared before the final installation. The surface for placing the tiles must be flat, firm, stable, compatible with the binding material, and clean.

We recommend using cement glue with polymeric additives as fitting material.

Recommended product: **H40 (Kerakoll)**

Before preparing the binding material, check the manufacturer's indications (way to use, etc).

The bonding materials are applied with a notched trowel to ensure optimal distribution across the surface. Should be avoided that the residues of fitting material get dry, remaining adhered on the surface of pieces, using a slightly damp sponge to clean the tile joints, passing it diagonally across them. Do not use dirty or brackish water.

4. Jointing

For technical reasons, it is not advisable to lay ceramic tiles without the corresponding layout joint.

For choosing the jointing material, one should take into account the place where the tiles (floor or wall) are fitted and their situation (indoor or outdoor), the use of joints with polymeric additives or synthetic resins being recommendable, and not Portland cement grout.

Recommended product: **Fugalite / Fugabella (Kerakoll)**

5. Cleaning









Do not use commercial products known as cement removers or scale removers, acid solutions used mainly to remove cement debris (work debris).

For cleaning excess installation materials before they have dried, use a sponge and plenty of water.

For subsequent cleanings we recommend the use of a soap damp-ened in water and neutral soap. Do not use powder detergents, nor metallic mops or abrasives. Do not use abrasive, acidic or alkaline cleaning products. Use a soft sponge with liquid soap and water to clean the tiles, and then dry them with a fine cloth.

Recommended product: **Fuga Soap (Kerakoll)**

Uses complete list

SERIE	Indoors 	Outdoors 	Wall 	Floor light traffic 	Floor medium traffic 	Shower wall 	Shower floor 	High vapour condensation areas (sauna, turkish bath) 
Abstra	✓	✓	✓			✓		✓
Rake	✓	✓	✓			✓		✓
House	✓	✓	✓			✓		✓
Framed	✓	✓	✓			✓		✓
Mist	✓	✓	✓			✓		✓
2Lines	✓	✓	✓			✓		✓
Slate	✓	✓	✓	✓		✓	✓	✓
Urban	✓	✓	✓	✓		✓	✓	✓
Artic	✓	✓	✓	✓		✓	✓	
Fusion	✓	✓	✓		✓	✓	✓	✓
Tempo	✓	✓	✓		✓	✓	✓	✓
Jurgen	✓	✓	✓			✓		✓
Metrik	✓		✓			✓		✓
Kondo	✓		✓			✓		✓
Trames	✓		✓			✓		✓
2Moreone	✓		✓			✓		✓
Cottage	✓		✓			✓		✓
Become	✓		✓			✓		✓
2Geom	✓		✓			✓		✓
Cosmos	✓		✓			✓		✓